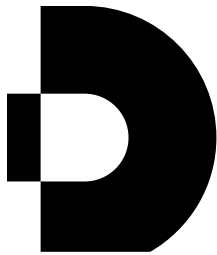
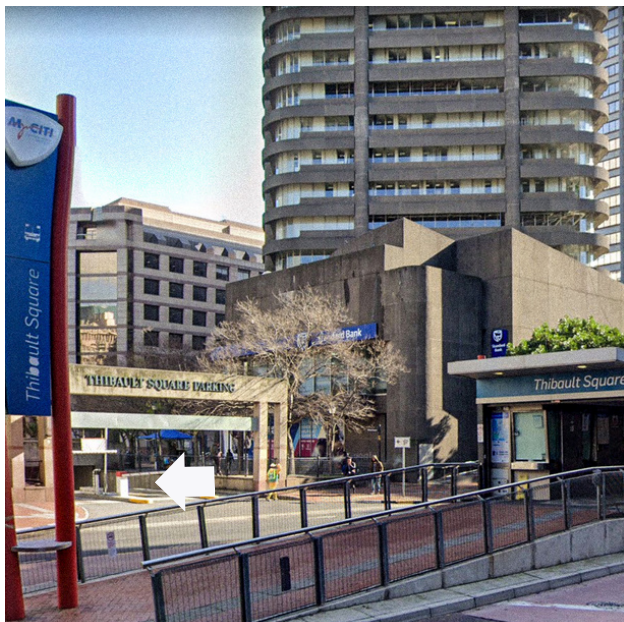
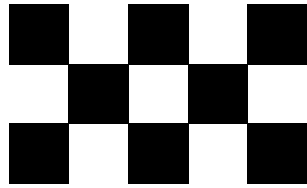


# THIS WAY TO ELEVATE YOUR ART



ARRIVING BY CAR



## Thibault Square Parking

**15 Hans Strijdom Ave. Cape Town, 8000**

Drive down Hans Strijdom Ave and turn left into the Thibault Square Parking entrance, opposite the Thibault Square MyCiti Bus Station.

Take the elevators/staircase inside the parking house up to the ground floor.

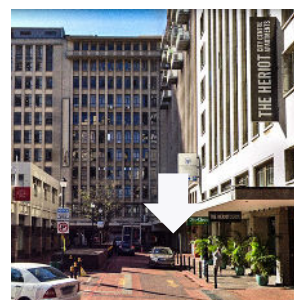
Exit the Thibault Square side doors and immediately turn right.

You will see Vida e Caffé in front of you – walk toward it and then take a left toward Thibault House.

Walk toward Dragon Loans at the bottom of Thibault House, passing The Heriot Apartment Building and Dis-Chem on your right.

Thibault House entrance is in the corner, in between Dragon Loans and the back entrance of the Fountains Hotel.

**Upon your arrival at the reception, please sign in with the concierge before taking the the elevator to Pressure Cooker Studios on the 9th floor.**



**GET YOUR  
PARKING  
TICKET  
STAMPED  
BY US**

